

Hopper Loader FG 422./71 (38)

- Modular and compact design
- Material hopper made of stainless steel
- With separate blower station
- Cleaning of conveying air filter by reversed airflow
- Shuttle valve actuated by lifting magnet or pneumatic cylinder
- Operator-friendly μ P-controller
- Programmable control functions for
 - conveying
 - filter cleaning
 - proportioning/dosing valve
 - purging valve
- Operating status indicated by LEDs
- End of conveying cycle via time or level
- Connection possibilities for external
 - level switch
 - start/stop switch
 - alarm
- Low-noise
- Options:
 - level switch
 - separate controller
 - volume extension
 - central filter



Hopper Loader FG 422._/71 (38)

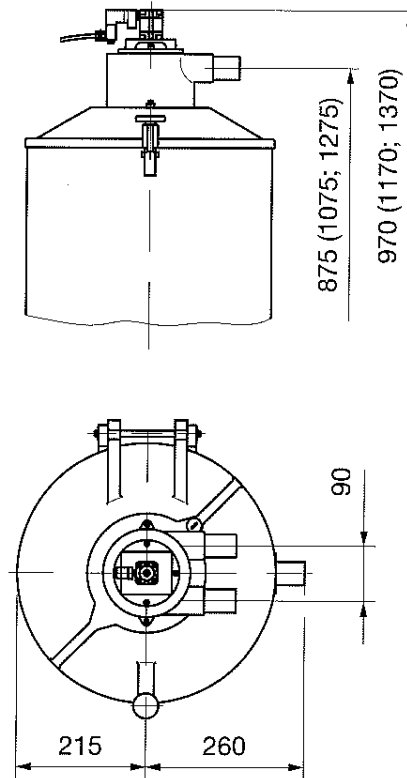
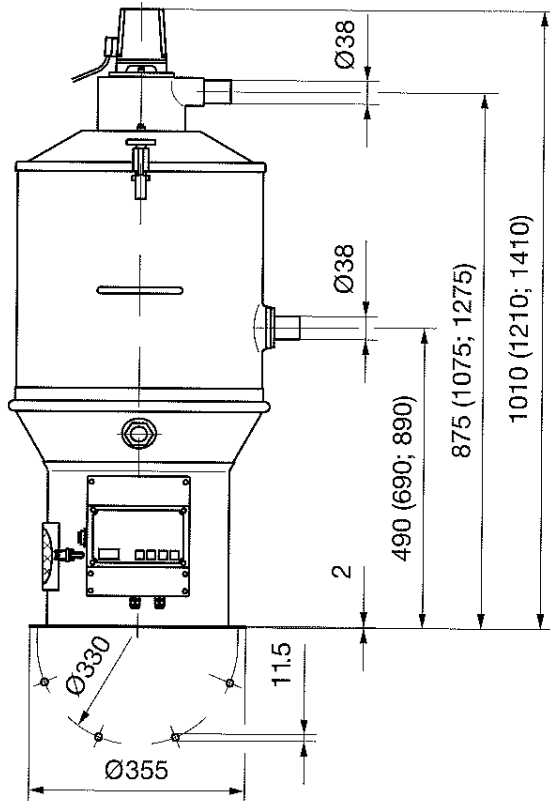
Application

The FG 422._/71 (38) hopper loader is used in factories of the plastics, rubber, chemical and recycling industries for the automatic feeding of hoppers, scales, mixers, dosing units, drying plants

and processing machines with pellets. The basic version of the unit consists of a feed station and a blower station.

Technical data

Feed station



• Conveying line diameter	mm	Ø 38
• Material to be conveyed		pellets/ reclaimed mat. max. 800
• Conveying capacity ¹⁾	kg/h	
• Material hopper		
– Material		Stainless steel
– Net volume	l	18 (43; 68)

• Conveying air filter		
– Version		Basket- supported filter
– Material	m ²	PET needled felt
– Surface		0.24
• Paint (valve attachment)		RAL 5018
• Noise emissions	dB (A)	< 80
• Weight	kg	33 (38; 42)

¹⁾ conveying of PE pellets over a distance 15 m, of which 4 m are vertical.

(...) with volume extension

For the technical data of the blower station, please refer to leaflet VKD 425.